



FORD & PARTNERS

ESTATE AGENTS



Acme House Barleyfields, Wooburn Moor, High Wycombe, HP10 0NH

This newly built six-bedroom detached home offers bright and spacious interiors, a large eat-in kitchen with direct garden access, and a generous plot in a sought-after location. Presented in exceptional condition, it is available immediately.

Available for Company Let on a long-term lease

- ***Available for Company Let***
- **Brand New Detached House**
- **Six Bedrooms**
- **Modern Fully Fitted Kitchen**
- **Downstairs W/C**
- **En-suite to Master Bedroom**
- **Gas Central Heating & UPVC Double Glazing**
- **Separate Reception Room**
- **Driveway Parking**
- **Available Immediately**

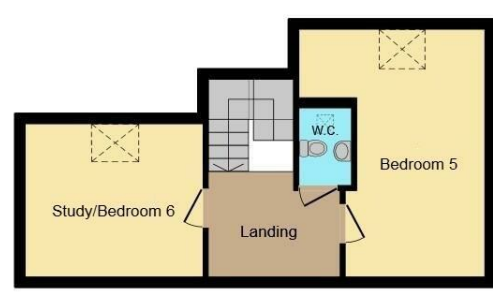
£4,000 Per month



Ground Floor



First Floor



Second Floor

Energy Efficiency Rating		
	Current	Potential
Very energy efficient - lower running costs		
(92 plus) A		
(81-91) B		
(69-80) C		
(55-68) D		
(39-54) E		
(21-38) F		
(1-20) G		
Not energy efficient - higher running costs		
England & Wales	EU Directive 2002/91/EC	

Environmental Impact (CO ₂) Rating		
	Current	Potential
Very environmentally friendly - lower CO ₂ emissions		
(92 plus) A		
(81-91) B		
(69-80) C		
(55-68) D		
(39-54) E		
(21-38) F		
(1-20) G		
Not environmentally friendly - higher CO ₂ emissions		
England & Wales	EU Directive 2002/91/EC	

